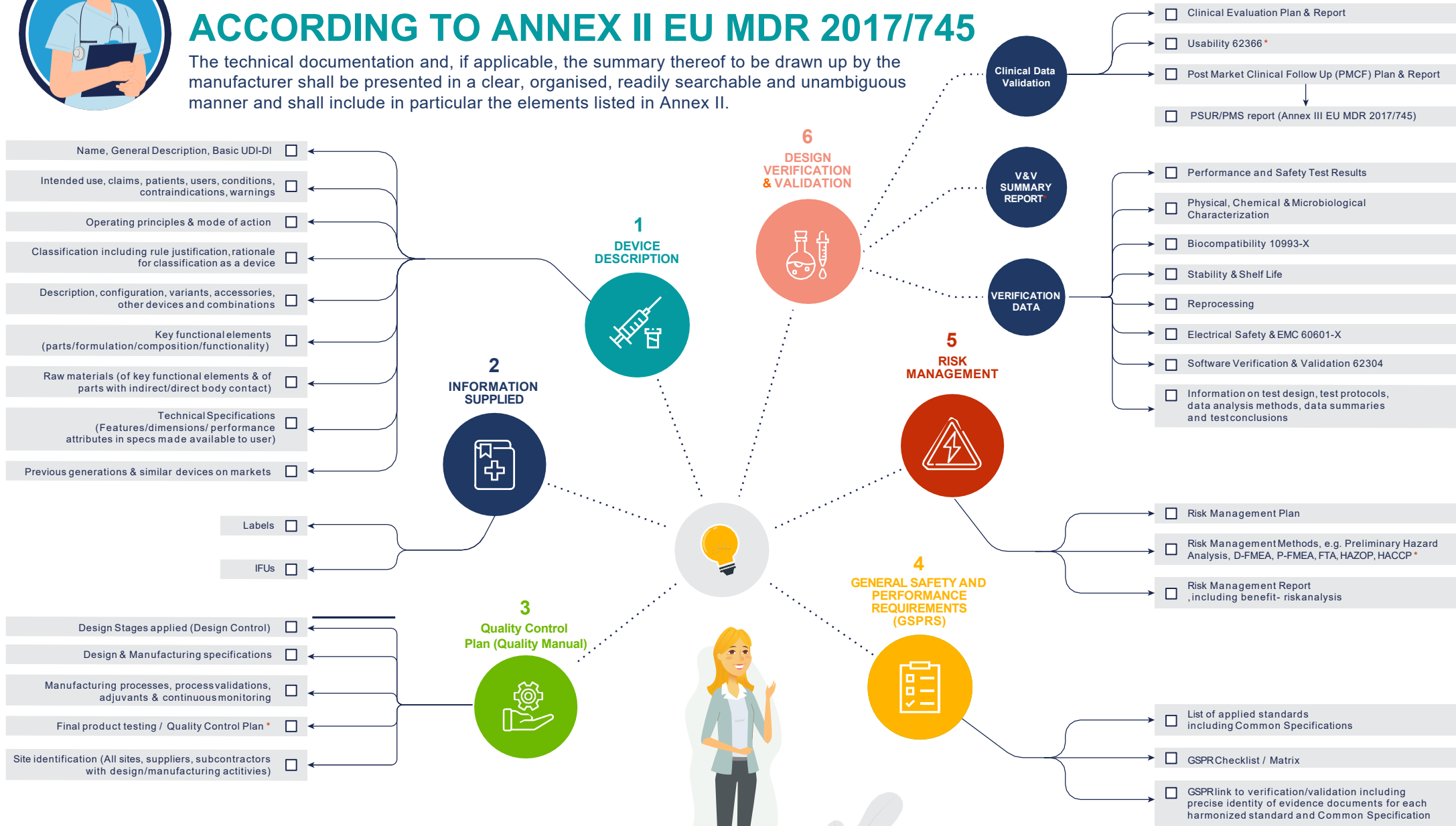




# TECHNICAL DOCUMENTATION STRUCTURE ACCORDING TO ANNEX II EU MDR 2017/745

The technical documentation and, if applicable, the summary thereof to be drawn up by the manufacturer shall be presented in a clear, organised, readily searchable and unambiguous manner and shall include in particular the elements listed in Annex II.



Jacqueline van Druten

✉ info@clin-r.com  
🌐 www.clin-r.com



**CLIN<sup>R+</sup>**